

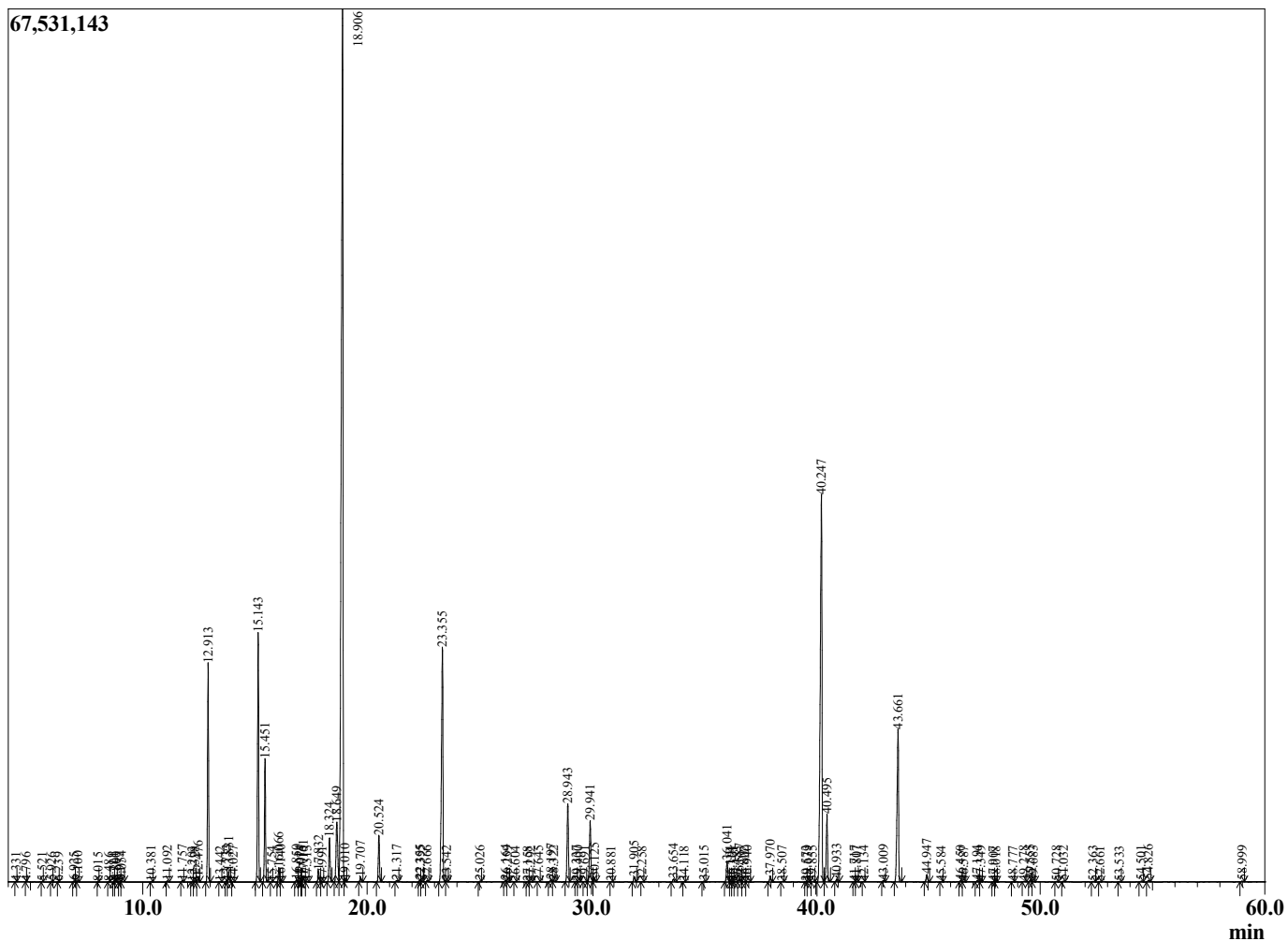
Sample Information

Sample Type : Essential Oil
 Sample Name : Laurus nobilis
 Injection Volume : 0.10

Laurel Bay
 Lot# CRD21-DE
 Country: Crete



Chromatogram Laurus nobilis



R.Time	Name	Area%
4.331	2-Methylbutanal	0.01
4.796	2-Ethylfuran	0.00
5.521	Methylpyrrole	0.01
5.926	Unidentified	0.01
6.239	Unidentified	0.00
6.925	Isopropyl isobutyrate	0.02
7.100	Hexanal	0.02
8.015	Unidentified	0.00
8.486	Isopropyl butyrate	0.00
8.711	1-Methylbutyl acetate	0.00
8.800	Ethyl 2-methylbutyrate	0.02
8.977	Ethyl isovalerate	0.03
9.054	Hex-(3Z)-enol	0.03
10.381	Isopropyl 2-methylbutyrate	0.01
11.092	Heptan-2-ol	0.03
11.757	Isobutyl isobutyrate	0.03
12.203	Hashishene	0.01
12.328	Tricyclene	0.01
12.476	alpha-Thujene	0.13
12.913	alpha-Pinene	5.47
13.442	Thujadiene isomer	0.01
13.733	alpha-Fenchene	0.04
13.831	Camphene	0.26
14.027	Unidentified	0.01
15.143	Sabinene	6.76
15.451	beta-Pinene	3.27
15.754	6-Methyl hept-5-en-2-one	0.01
16.066	Myrcene	0.39
16.140	dehydro-1,8-Cineole	0.03
16.850	Isobutyl 2-methylbutyrate	0.05
17.014	Pseudolimonene	0.02
17.075	Unidentified	0.01
17.161	alpha-Phellandrene	0.17
17.313	delta-3-Carene	0.02
17.832	alpha-Terpinene	0.32
17.991	meta-Cymene	0.01
18.324	para-Cymene	1.37
18.649	Limonene	2.49
18.906	1,8-Cineole	37.32
19.010	(Z)-beta-Ocimene	0.06
19.707	(E)-beta-Ocimene	0.14
20.524	gamma-Terpinene	1.35
21.317	trans-Sabinene hydrate	0.05
22.355	Terpinolene	0.05
22.395	trans-Linalool oxide (furanoid)	0.02
22.666	2-Nonanone	0.03
23.355	Linalool	8.55
23.542	Hotrienol	0.02
25.026	cis-para-Menth-2-en-1-ol	0.02
26.164	trans-Pinocarveol	0.04
26.259	trans-para-Menth-2-en-1-ol	0.01
26.604	Camphor	0.01
27.158	Unidentified	0.01
27.292	Sabina ketone	0.01
27.645	Pinocarvone	0.01
28.197	delta-Terpineol	0.08

R.Time	Name	Area%
28.322	Borneol	0.04
28.943	Terpinen-4-ol	2.53
29.337	para-Cymen-8-ol	0.01
29.400	trans-Isocarveol	0.01
29.691	para-Mentha-1,5-dien-7-ol	0.01
29.941	alpha-Terpineol	2.04
30.125	Estragole	0.12
30.881	trans-Piperitol	0.01
31.905	Nerol	0.17
32.258	cis-para-Mentha-1(7),8-dien-2-ol	0.01
33.654	Linalyl acetate	0.10
34.118	Unidentified	0.01
35.015	Unidentified	0.02
36.041	Bornyl acetate	0.70
36.194	Isobornyl acetate	0.01
36.301	trans-Sabinyol acetate	0.01
36.483	Cymen-7-ol	0.01
36.587	2-Undecanone	0.09
36.802	Terpin-1-en-4-yl acetate	0.01
36.940	Carvacrol	0.01
37.970	delta-Terpinyl acetate	0.19
38.507	Unidentified	0.02
39.573	Unidentified	0.02
39.639	Unidentified	0.01
39.855	Unidentified	0.02
40.247	alpha-Terpinyl acetate	16.24
40.495	Eugenol	2.13
40.933	Neryl acetate	0.09
41.717	alpha-Ylangene	0.01
41.807	Isoledene	0.01
42.134	alpha-Copaene	0.01
43.009	beta-Elemene	0.05
43.661	Methyleugenol	5.75
44.947	trans-beta-Caryophyllene	0.26
45.584	Unidentified	0.01
46.450	(E)-Cinnamyl acetate	0.04
46.587	Unidentified	0.01
47.194	alpha-Humulene	0.05
47.349	Unidentified	0.01
47.907	Unidentified	0.00
48.018	Unidentified	0.01
48.777	Germacrene D	0.01
49.278	beta-Selinene	0.02
49.555	(E)-Methyl isoeugenol	0.06
49.683	Bicyclogermacrene	0.02
50.728	gamma-Cadinene	0.02
51.032	delta-Cadinene	0.02
52.363	(E)-alpha-Bisabolene	0.02
52.661	Elemicin	0.01
53.533	Unidentified	0.01
54.501	Spathulenol	0.03
54.826	Caryophyllene oxide	0.05
58.999	alpha-Eudesmol	0.03
		100.00